

## **The conference will take part at three institutions:**

**November, 15 Institute of Philosophy RAS (*Kropotkinskaya* subway station)**

**November, 16 The Higher School of Economics (*Kitay-Gorod* subway station)**

**November, 17 Moscow State University (*Universitet* subway station)**

**(See the maps with the addresses)**

**The registration starts at 8.50 November, 15 at Institute of Philosophy RAS (*Kropotkinskaya* subway station).**

**There are no conference fees for all the participants. However the people coming from the USA, the UK, Ireland and Egypt would have to cover the fees we paid for the visa invitations in the amount of 16 \$.**

**There are three main airports in Moscow – Domodedovo, Vnukovo and Sheremetievo. There are 2 ways to get to the city from an airport: by a taxi (around 100 \$) and by the train “Aeroexpress” (10 \$). It takes 30-40 mins to get from an airport to one of the central subway stations (Domodedovo – Paveletskaya subway station; Vnukovo – Kievskaya subway station; Sheremetievo – Belorusskaya subway station) by the train.**

**The cost of one ride in Moscow subway is around 80 cents (28 rubles).**

**We recommend you two hotels, which have central locations.**

**Academicheskaya hotel <http://www.moscow-hotel.ru/eng/academicheskaya.php> (*Oktyabrskaya* subway station)**

**Warshava hotel**

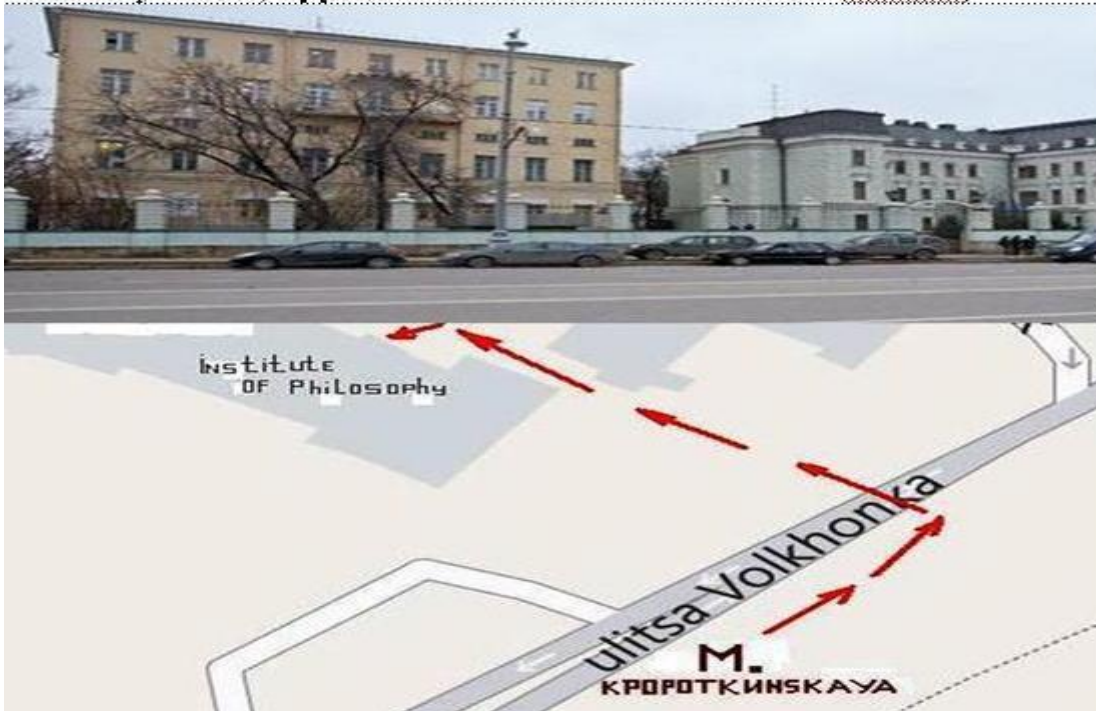
**<http://www.budgetmoscow.com/hotels/view/058/> (*Oktyabrskaya* subway station)**

**There is a cheaper Hotel <http://hotel-izmailovo.com/en> (less than 100\$per night)(*Partizanskaya* subway station)**

See the maps:

1. *Institute of Philosophy* of Russian Academy of Science  
Address: Volkhonka 14,

Volkhonka 14, Train station “Kropotkinskaya”, first car if moving from city centre; opposite the Cathedral of Christ the Saviour)

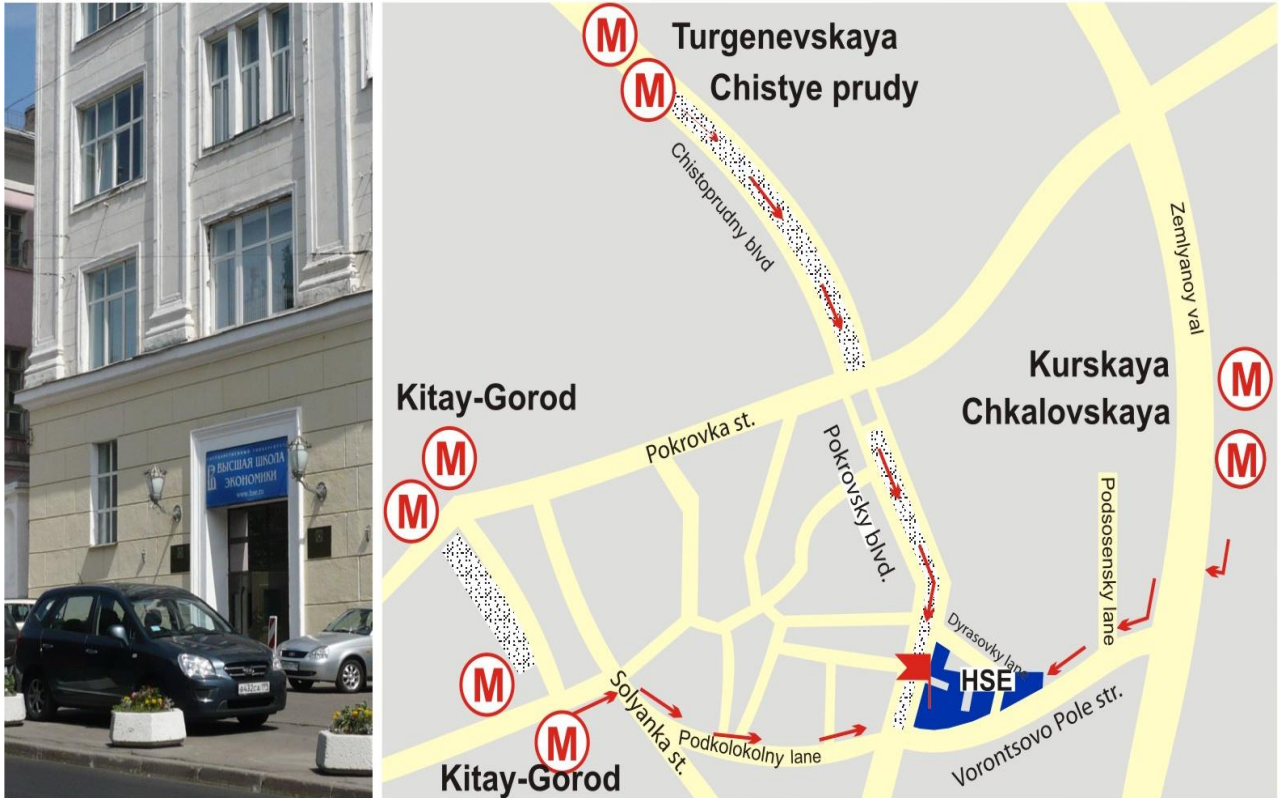


2. Moscow State Lomonosow-University (MSU),  
Lomonosovskiy Prospect, 27.

Train station “Universitet”. The last car from the center. Take to the street “Lomonosovskiy prospect” about 800 m.



**3. The Higher School of Economics – National Research University  
Pokrovsky Boulevard 11.**



**National Research University – Higher School of Economics, Moscow, Pokrovskiy boulevard, 11, Building «Г» & «Е», M.Chkalovskaya, м. Kurskaya, M.Chistye prudy, M.Turgenevskaya**